



## SECTION 1 PLIOCENE RIDGE COMMUNITY SERVICES DISTRICT

### 1.1 LOCAL HAZARD MITIGATION PLANNING TEAM

Primary Point of Contact		Alternate Point of Contact	
Name and Title:	Rae Bell Arbogast, District Manager	Name and Title:	Jim Buckbee District Fire Chief
Address:	100 Pike City Road Pike City, CA 95960	Address:	100 Pike City Road Pike City, CA 95960
Phone Number:	530-287-3454	Phone Number:	530-301-5152
Email:	plioceneridge@gmail.com	Email:	snowplowpoet@yahoo.com
Contributors:			
Name and Title:	Rae Bell Arbogast, District Manager		
Method of Participation:	Attended Steering Committee/Planning Partner meetings, completing first draft of annex for Pliocene Ridge CSD Board review.		
Name and Title:	Jim Buckbee, District Fire Chief		
Method of Participation:	Input on annex prior to board review.		
Name and Title:			
Method of Participation:			
Name and Title:			
Method of Participation:			
Name and Title:			
Method of Participation:			

### 1.2 JURISDICTIONAL PROFILE

#### 1.2.1 Overview

The formation of the district was initiated in 2003 with a petition signed by two-thirds of the registered voters within the district. The district was formed to secure tax-based funding for local fire services. The resolution to form Pliocene Ridge CSD was passed by the Sierra County Board of Supervisors and approved by LAFCO in February of 2004. The district officially began operations on January 1, 2005.

The district serves primarily as a “Fire District” for Alleghany, Forest City and Pike City. It also acts as a “Streetlight District” for Alleghany and Forest City. Both the Alleghany and the Pike City Fire Departments operate under the authority of Pliocene Ridge CSD and are managed by the district.

Approximately 66% of the land within the district's boundaries is National Forest land that does not generate tax revenue.

The District participates in the Public Protection Class Rating System and currently has a rating of 05/5Y.

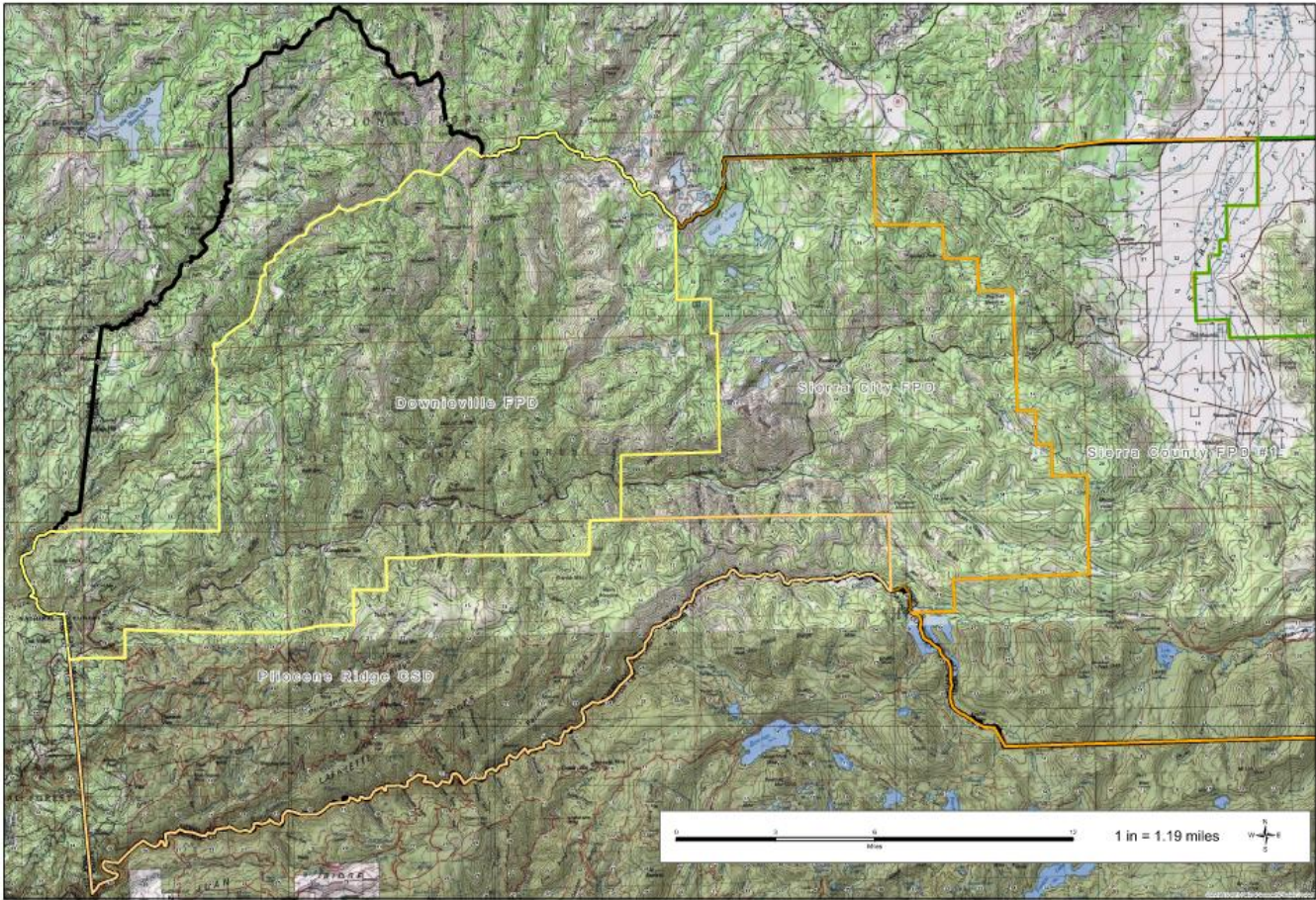
#### 1.2.2 Service Area



Pliocene Ridge CSD covers an area of approximately 115 square miles bounded on the east by Jackson Meadows Reservoir; bounded on the west by the county line common between Sierra and Yuba Counties; bounded on the south by the county line common between Sierra and Nevada Counties; and bounded on the north by the watershed division of the North Yuba River.

Approximately 350 people reside in the district.

Figure 1. Pliocene Ridge Community Services District Service Area (tan outline)



### 1.2.3 Governing Body

The District is governed by an appointed five-member Board of Directors, which assumes responsibility for the adoption of this plan. The District Fire Chief and Manager will oversee the plan’s implementation.

### 1.2.4 Assets

Asset	Value
<b>Property</b>	
Parcel that Alleghany Station 1 sits on. 2004 Booked value.	\$ 11,387
Parcel that Pike City Firehouse sits on.	\$ 3,453



2004 Booked value.	
<b>Equipment</b>	
Emergency Response Vehicles Pike	\$87,927
Emergency Response Vehicles Alleghany	\$41,822
Equipment Pike Fire Department	\$65,853
Equipment Alleghany Fire Department	\$60,612
(Small tools and equipment are not included, only capitalized equipment)	\$
<b>Total:</b>	<b>\$271,054</b>
<b>Critical Facilities</b>	
Alleghany Firehouse Station 1 2004 booked value (not replacement value)	\$ 52,574
Pike City Firehouse 2004 booked value (not replacement value)	\$ 87,735
Alleghany Firehouse Station 2 (owned by Sierra County) Not on the District's books.	\$
	\$
<b>Total:</b>	<b>\$140,309</b>

### 1.3 CURRENT TRENDS

The Community of Pike is growing, becoming more of a “bedroom” community for people who work in western Nevada County. The community of Forest City is almost a “ghost town” with only 2 full-time residents. The remaining homes are second homes to people who don’t live in Sierra County. The community of Alleghany did not experience a population decrease with the last census and this is the first time in 100 years that the town does not show a population decline from decade to decade. It remains to be seen if the population has stabilized or if it will continue to shrink.

Like Forest City, both Alleghany and Pike are experiencing an increase in the number of homes being used as “second homes” by people who do not live here full-time. This has a detrimental effect on efforts to stabilize fire and ems services. Part-time residents rarely if ever join the volunteer fire departments, and if they do, their availability is minimal.

There is a severe decline in civic participation in our area. This has a negative impact on community organizations such as the fire departments, the fire department auxiliaries and local non-profits.

The firewise communities of Pike and Alleghany are administered by the manager of Pliocene Ridge CSD, and it is difficult to get committee members. It is difficult to get people to turn in their firewise hours, even though much of the work can be seen from the roadways. Thankfully, firewise USA has very minimal





work requirements and we are allowed to turn in work that the County does along the roadways to help meet the quota.

## 1.4 CAPABILITY ASSESSMENT

This section describes an assessment of existing capabilities for implementing hazard mitigation strategies. The introduction at the beginning of this volume of the hazard mitigation plan describes the components included in the capability assessment and their significance for hazard mitigation planning.

Findings of the capability assessment were reviewed to identify opportunities to expand or improve upon capabilities to further hazard mitigation goals and objectives. Where such opportunities were identified and determined to be feasible, they are included in the action plan.

### 1.4.1 Planning and Regulatory Capabilities

Plan, Study or Program	Date of Most Recent Update	Comment
Firewise USA Community Risk Assessment (Pike and Alleghany)	2021	New Risk Assessments are due in 2026 (every 5 years)
Firewise USA Community Action Plans (Pike and Alleghany)	2023	New Action Plans are due in 2026 (every 3 years)
Standard Operating Guidelines	2022	This is the firefighter’s handbook for emergency response standards of operation.
Policies and Procedures	regularly	Some of the policies deal with planning.

#### ***Opportunities to Expand Planning and Regulatory Capabilities***

The District is a member of the California Special District’s Association and participates in their online forum with other districts.

The district needs to partner with Cal Fire regarding defensible space advisor training. A few community members have expressed an interest in taking the training.

The district recently established a Capital Improvement Fund and will be working on a Capital Improvement Plan.



## 1.4.2 Administrative and Technical Capabilities

Staff/Personnel Resource	Available?
Planners or engineers with knowledge of land development and land management practices	0
<i>If Yes, Department /Position:</i>	
Engineers or professionals trained in building or infrastructure construction practices	0
<i>If Yes, Department /Position:</i>	
Planners or engineers with an understanding of natural hazards	0
<i>If Yes, Department /Position:</i>	
Staff with training in benefit-cost analysis	0
<i>If Yes, Department /Position:</i>	
Surveyors	0
<i>If Yes, Department /Position:</i>	
Personnel skilled or trained in GIS applications	0
<i>If Yes, Department /Position:</i>	
Scientist familiar with natural hazards in local area	0
<i>If Yes, Department /Position:</i>	
Emergency manager	1
<i>If Yes, Department /Position:</i>	Jim Buckbee, District Fire Chief
Grant writers	1
<i>If Yes, Department /Position:</i>	Rae Bell Arbogast, District Manager
Procurement Services and Management	0
<i>If Yes, Department /Position:</i>	

### Opportunities to Expand Administrative and Technical Capabilities

The district struggles to fulfill minimal critical administrative duties. A recent ad advertising for help at minimum wage for a job previously filled by a volunteer for ten years has gone unanswered. The district would be happy if it had more help covering basic administration let alone expanding.

The district relies on regional agencies and the County for assistance with administrative and technical assistance whenever help is available. The County's GIS system is a good example of something that the special districts are supposed to have but lack the resources to create.



### 1.4.3 Fiscal Capabilities

Financial Resource	Accessible or Eligible to Use?
Community Development Block Grants	Our understanding is that Sierra County is not signed up for this.
Capital Improvements Project Funding	See note under 1.4.1
Authority to Levy Taxes for Specific Purposes	Yes, but voter approval required.
User Fees for Water, Sewer, Gas or Electric Service	N/A
<i>If yes, specify:</i>	
Incur Debt through General Obligation Bonds	Not sure.
Incur Debt through Special Tax Bonds	Not sure.
Incur Debt through Private Activity Bonds	Not sure.
Withhold Public Expenditures in Hazard-Prone Areas	N/A
State-Sponsored Grant Programs	Yes
Development Impact Fees for Homebuyers or Developers	Yes

#### Opportunities to Expand Fiscal Capabilities

### 1.4.4 Education and Outreach Capabilities

Criterion	Response
Do you have a public information officer or communications office?	NO
Do you have personnel skilled or trained in website development?	Yes
Do you have hazard mitigation information available on your website?	Yes
<i>If yes, briefly describe:</i>	The website has several pages under the header of firewise plus a wildfire mitigation resource page <a href="https://www.plioceneridge.org/wildfire-preparedness-resources">https://www.plioceneridge.org/wildfire-preparedness-resources</a>
Do you use social media for hazard mitigation education and outreach?	Yes
<i>If yes, briefly describe:</i>	The Pike Dept. has a FB page plus there is a FB page for each firewise community (Pike and Alleghany)
Do you have any citizen boards or commissions that address issues related to hazard mitigation?	Yes
<i>If yes, briefly describe:</i>	Firewise Community Committees
Do you have any other programs in place that could be used to communicate hazard-related information?	Yes
<i>If yes, briefly describe:</i>	We use direct mailings and public events to educate the residents.
Do you have any established warning systems for hazard events?	Yes
<i>If yes, briefly describe:</i>	Alleghany has a siren, Pike has an electronic message board, plus the command vehicles have sirens and loud speakers that could be used to communicate as they drive around. Alleghany is easier in this regard as the residents are close to each other. In Pike where things are spread out, it is not as feasible. We encourage all residents to sign up for the Everbridge notification system.



## Opportunities to Expand Education and Outreach Capabilities

### 1.4.5 Community Classifications

	Participating?	Classification	Date Classified
FIPS Code			
UEI#	LKH3KJUBJU6		
Community Rating System			
Building Code Effectiveness Grading Schedule			
Public Protection	Yes	05/5Y	2020
Storm Ready			
Firewise	Yes	In good standing	2021

### 1.4.6 Adaptive Capacity for Climate Change

Criterion	Jurisdiction Rating <sup>a</sup>
<b>Technical Capacity</b>	
Jurisdiction-level understanding of potential climate change impacts	Yes
<i>Comment: As an entity that functions primarily as a "Fire District" catastrophic wildfire is high on our list of concerns.</i>	
Jurisdiction-level monitoring of climate change impacts	Yes
<i>Comment: By observation of the environment.</i>	
Technical resources to assess proposed strategies for feasibility and externalities	No
<i>Comment: Not without assistance of some type.</i>	
Jurisdiction-level capacity for development of greenhouse gas emissions inventory	No
<i>Comment:</i>	
Capital planning and land use decisions informed by potential climate impacts	Yes
<i>Comment: The district needs to bring its facilities up to UWI standards.</i>	
Participation in regional groups addressing climate risks	Yes
<i>Comment: This County-wide planning group is a regional effort.</i>	
<b>Implementation Capacity</b>	
Clear authority/mandate to consider climate change impacts during public decision-making processes	No
<i>Comment:</i>	
Identified strategies for greenhouse gas mitigation efforts	No
<i>Comment:</i>	
Identified strategies for adaptation to impacts	Yes
<i>Comment: Fire fuel reduction efforts.</i>	



Champions for climate action in local government departments	No
<i>Comment:</i>	
Political support for implementing climate change adaptation strategies	No
<i>Comment:</i>	
Financial resources devoted to climate change adaptation	Yes
<i>Comment:</i>	<i>The district supports the firewise efforts.</i>
Local authority over sectors likely to be negative impacted	No
<i>Comment:</i>	
<b>Public Capacity</b>	
Residents' knowledge of and understanding of climate risk	Yes
<i>Comment:</i>	<i>Wildfire risk is high on everyone's list of major concerns.</i>
Residents' support of adaptation efforts	Yes
<i>Comment:</i>	<i>Everyone wants to see vegetation thinning in our area.</i>
Residents' capacity to adapt to climate impacts	No
<i>Comment:</i>	<i>Low-income and elderly people make up most of the population.</i>
Local economy current capacity to adapt to climate impacts	No
<i>Comment:</i>	<i>The district lacks financial resources of its own to implement adaptation measures.</i>
Local ecosystems capacity to adapt to climate impacts	Yes
<i>Comment:</i>	<i>Nature adapts.</i>

a. High = Capacity exists and is in use; Medium = Capacity may exist but is not used or could use some improvement; Low = Capacity does not exist or could use substantial improvement; Unsure= Not enough information is known to assign a rating.

## 1.5 INTEGRATION

For hazard mitigation planning, “integration” means that hazard mitigation information is used in other relevant planning mechanisms, such as capital facilities planning, and that relevant information from those sources is used in hazard mitigation. This section identifies where such integration is already in place, and where there are opportunities for further integration in the future. Resources listed at the end of this annex were used to provide information on integration. The progress reporting process described in Volume 1 of the hazard mitigation plan will document the progress of hazard mitigation actions related to integration and identify new opportunities for integration.

### 1.5.1 Existing Integration

Some level of integration has already been established between local hazard mitigation planning and the following other local plans and programs:

- Firewise USA communities
- The US Forest Service and Southern Pacific Industries are working together in our area to create a large shaded fuel break around Pike and along ridge road.
- The Sierra County Road crew performs vegetation management along the roadways.





- Out local electricity provider PG&E has been clearing massive amounts of vegetation away from the power lines in our district and is also implementing a plan to move many electrical lines underground.
- The Sierra County Firesafe Counsel is working on planning grant applications for vegetation thinning projects in Pike and Alleghany.

### 1.5.2 Opportunities for Future Integration

The capability assessment in this annex indicates opportunities to integrate this mitigation plan with other jurisdictional planning/regulatory capabilities. Capabilities were identified as integration opportunities if they can support or enhance the actions identified in this plan or be supported or enhanced by components of this plan. The capability assessment identified the following plans and programs that do not currently integrate hazard mitigation information but provide opportunities to do so in the future:

- Continue to work with the Sierra County Firesafe Counsel to hopefully acquire funding for planning projects and future fuel reduction projects.
- Search for grant funding to upgrade the district’s facilities and firefighting apparatus.
- Continue to educate the community about fire hazard mitigation around homes.
- Work with local State and Federal Agencies and Southern Pacific Industries to encourage fuels reduction work in our area.

## 1.6 NATIONAL FLOOD INSURANCE PROGRAM COMPLIANCE

Special purpose districts are not eligible to participate in the National Flood Insurance Program.

## 1.7 PUBLIC OUTREACH

Local Outreach Activity	Date	Number of People Involved
<b>Annual Mailer</b>	2/21/2025	250 pieces mailed to property owners plus a few residents who do not own their homes.
<b>Electronic Sign in front of Pike Firehouse</b> This sign is visible on the main road through Pike. Alleghany and Forest City residents have to drive past it to get home, so they see it too.	Daily	Everyone who drives through Pike sees it.
<b>Monthly board meetings open to the public</b>	Monthly	10 to 15 attendees plus others see the meeting packets



		online. 36 are signed up for email packets.
<b>Website</b>		As explained above the website contains a lot of fire hazard mitigation info.
<b>Local Newspaper articles/updates/meetings and trainings on calendar of events.</b>	Articles periodically, calendar weekly	500+

### 1.8 INFORMATION SOURCES USED FOR THIS ANNEX

The following technical reports, plans, and regulatory mechanisms were reviewed to provide information for this annex.

- ISO announcement letter from 2020 provides the ISO ratings for Pike and Alleghany.
- Management’s Discussion and Analysis of Operations from audit reports, used for description of district.
- Balance Sheet used for asset values.
- Firewise USA documents reviewed for Pike and Alleghany for action plan and risk assessment dates.

The following outside resources and references were reviewed:

- **Hazard Mitigation Plan Annex Development Toolkit**—The toolkit was used to support the identification of past hazard events and noted vulnerabilities, the risk ranking, and the development of the mitigation action plan.
- <INSERT DOCUMENT AND DESCRIPTION OF HOW IT WAS USED>